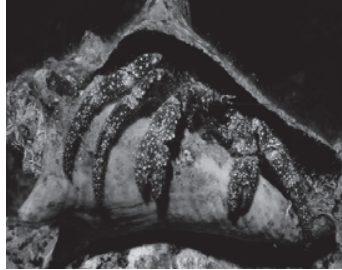


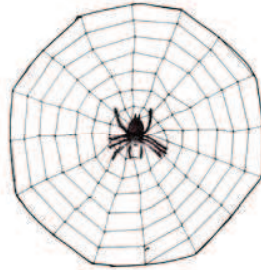
She Needs Less Shell

Focus: Short "e" Words

The crab has a big shell.
 The shell does not fit well.
 I can tell she needs
 less shell.



She fell when she tried
 to carry this shell.



The spider has a web.
 She made the web to get bugs.
 She goes to bed on the web
 and waits for them to come.
 They may come on part of the web.
 She will get them and fix her web.
 More bugs may come to her web.
 She sets her web like a trap and waits.
 She waits well.

Name: _____

1) Why does she need less shell?

2) Why did she make the web?

3) What does she do well?
