

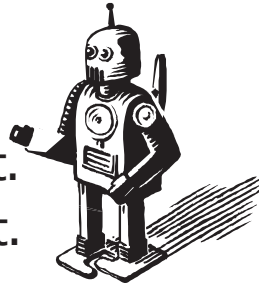
# The Pot is Hot

Focus: Words in the -ot family



I have got a pot.  
 The pot is hot.  
 It is a hot pot.  
 We all got hot soup from the pot.  
 Now there is not a lot in my pot.

Scott has got a robot.  
 His robot has got a spot.  
 The spot on the robot is a dot.  
 Scott put the dot on the robot.  
 Scott likes his robot a lot.



Name: \_\_\_\_\_

1) Is there a lot in the hot pot?

\_\_\_\_\_

-----

\_\_\_\_\_

-----

\_\_\_\_\_

2) What has Scott got?

\_\_\_\_\_

-----

\_\_\_\_\_

-----

\_\_\_\_\_

3) Does Scott like his robot?

\_\_\_\_\_

-----

\_\_\_\_\_

-----

\_\_\_\_\_